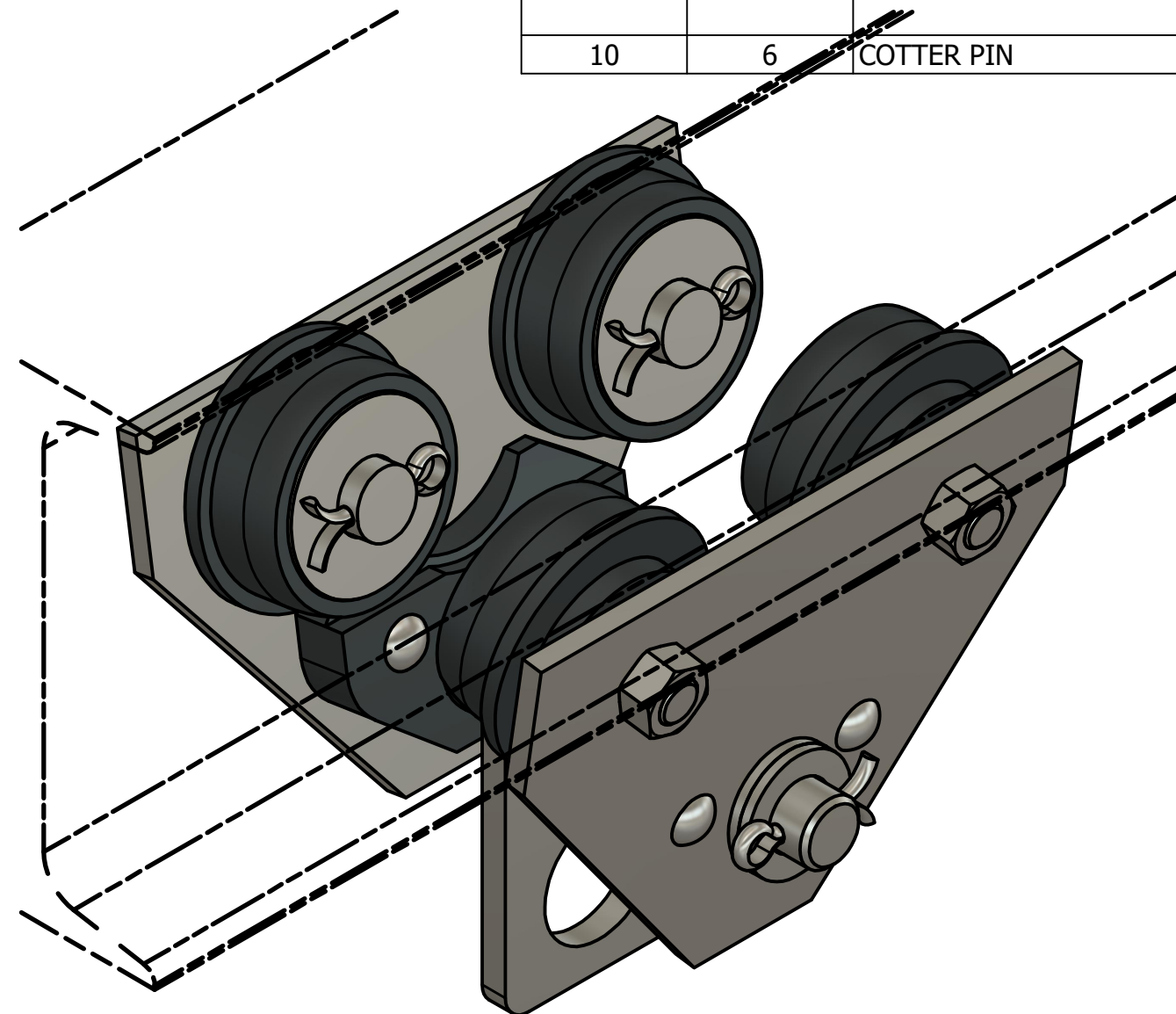


METRIC

PARTS LIST				
ITEM	QTY	PART NUMBER	MATERIAL	DESCRIPTION
1	2	SIDE PLATE SUB-ASSEMBLY		
1.1	1	SLIDE PLATE	MILD STEEL	
1.2	1	GUIDE	CAST IRON	
1.3	2	RIVET	STANDARD	BUTTON HEAD, $\varnothing 10$ x 60 LONG
2	1	AXLE	COLD ROLLED STEEL	
3	1	HOOK	MILD STEEL	10 THICK
4	44	ROLLER BEARING	COLD ROLLED STEEL	$\varnothing 10$ x 38 LONG
5	4	WHEEL	CAST IRON	
6	4	WHEEL AXLE	COLD ROLLED STEEL	
7	12	ADJUSTING WASHER	STANDARD	$\varnothing 26$ ID X $\varnothing 44$ OD x 4 THICK
8	4	WASHER	STANDARD	$\varnothing 26$ ID x $\varnothing 65$ OD x 3 THICK
9	4	LOCKNUT	STANDARD	M16 x 2 (PREVAILING TORQUE INSERT -TYPE)
10	6	COTTER PIN	STANDARD	$\varnothing 6$ x 40 LONG



TROLLEY ASSEMBLY
SCALE 1 / 2

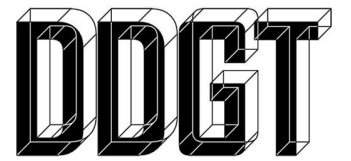
GENERAL NOTES

TROLLEY TO BE MOUNTED ON AN S200 X 34 BEAM

ALL CHAMBERS ARE 2 x 2 UNLESS OTHERWISE

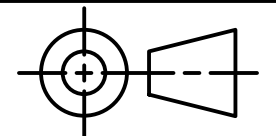
LEGEND:

- Ø DIAMETER
- R RADIUS
- ° DEGREES
- SPOTFACE/
COUNTERBORE
- ∨ COUNTERSINK
- ∇ DEPTH
- CUBED



DIGITAL DESIGN
GRAPHICS
TECHNOLOGY

WWW.DDGT.NET



TOLERANCES UNLESS SPECIFIED:
MILLIMETERS:
WHOLE NUMBERS = ± 0.5
XX = ± 0.25
XXX = ± 0.12
FRACTIONAL $\pm 1/64$ "
ANGLES ± 1 DEGREE
SURFACES ³² ✓

CLASS: DDGT120

ASSIGNMENT #: XX

INVENOR DRAWING NAME:
TROLLEY

FIG #: 14-83

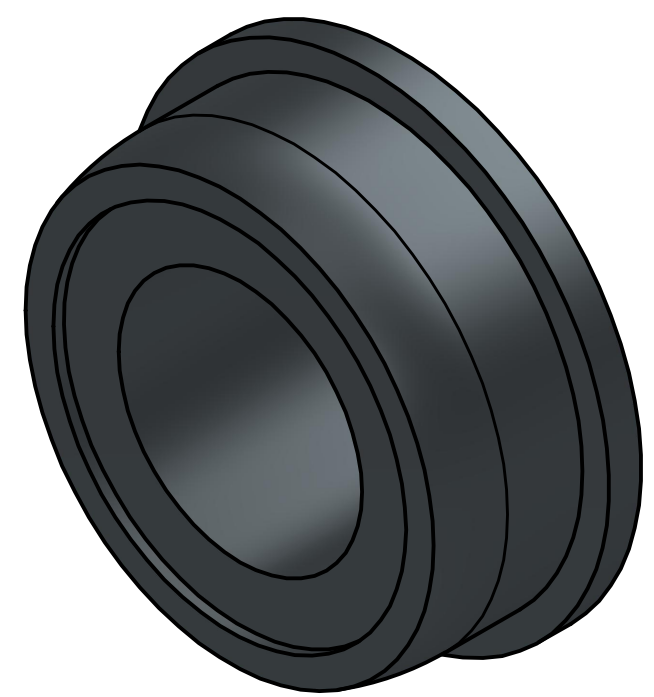
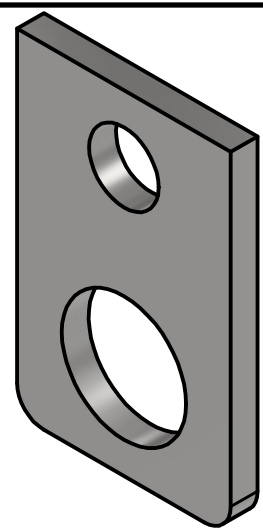
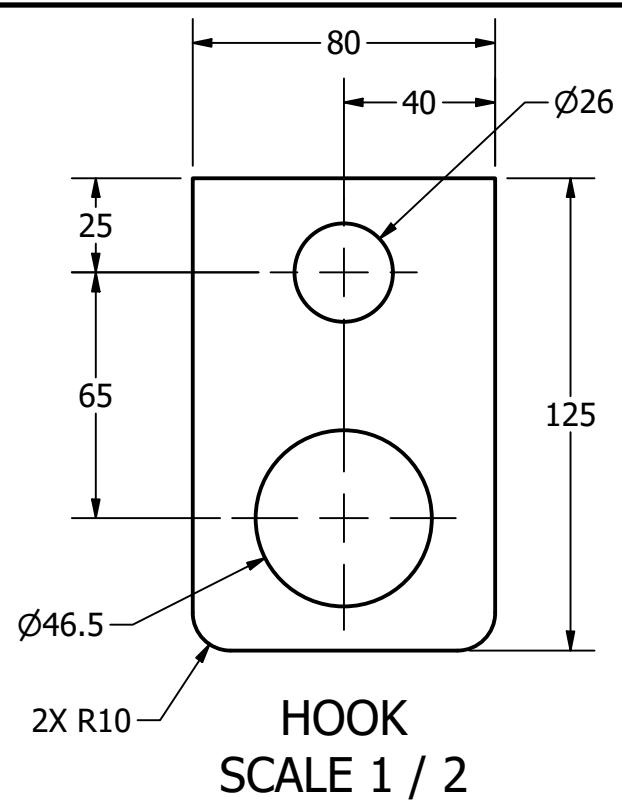
MANAGER: G. STROMMEN

DRAFTER: N. CABADING

DATE: 12/4/2023

SCALE: AS NOTED

PAGE #: 1 OF 6



PARTS LIST		
ITEM	QTY	PART NUMBER
3	1	HOOK
5	4	WHEEL
6	4	WHEEL AXLE

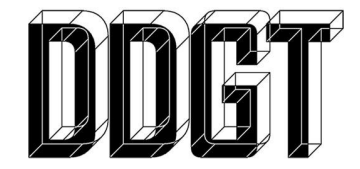
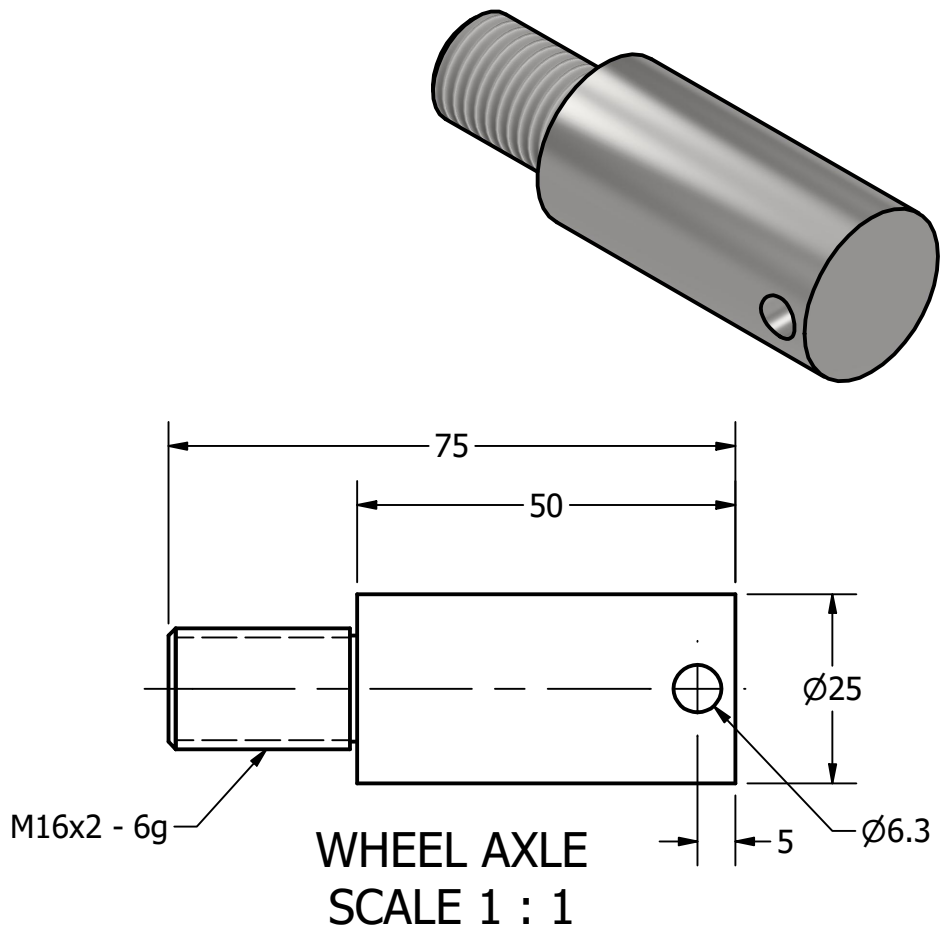
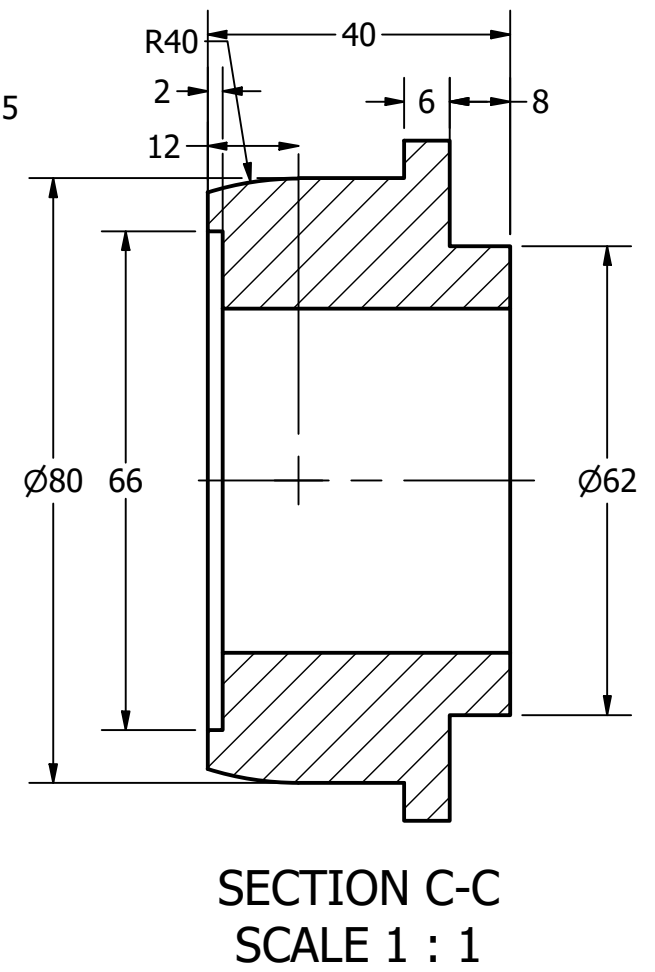
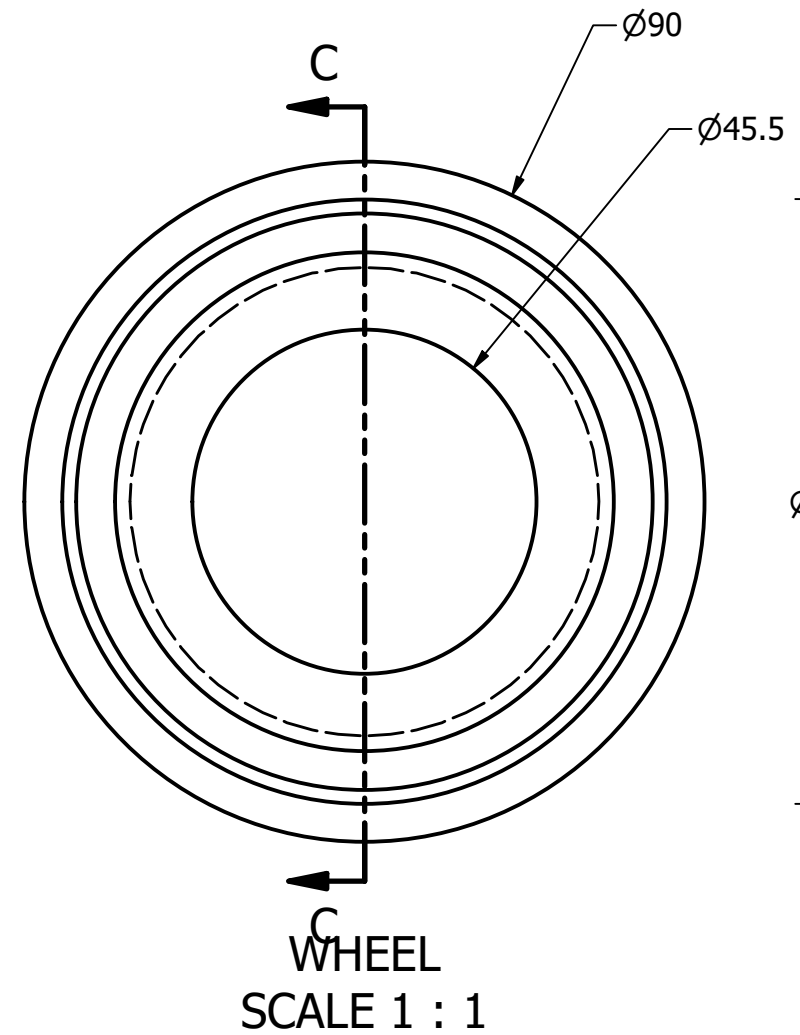
GENERAL NOTES

TROLLEY TO BE MOUNTED ON AN S200 X 34 BEAM
ALL CHAMBERS ARE 2 x 2 UNLESS OTHERWISE

LEGEND:

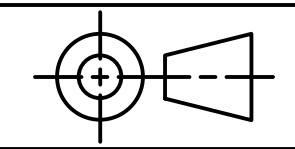
- Ø DIAMETER
- R RADIUS
- ° DEGREES
- SPOTFACE/
COUNTERBORE
- ∇ COUNTERSINK
- ∇ DEPTH
- CUBED

METRIC



DIGITAL DESIGN
GRAPHICS
TECHNOLOGY

WWW.DDGT.NET



TOLERANCES UNLESS SPECIFIED:
MILLIMETERS:
WHOLE NUMBERS = ±.5
XX = ±.25
XXX = ±.12
FRACTIONAL ± 1/64"
ANGLES ±1 DEGREE
SURFACES ³² ✓

CLASS: DDGT120

ASSIGNMENT #: XX

INVENOR DRAWING NAME:
TROLLEY

FIG #: 14-83

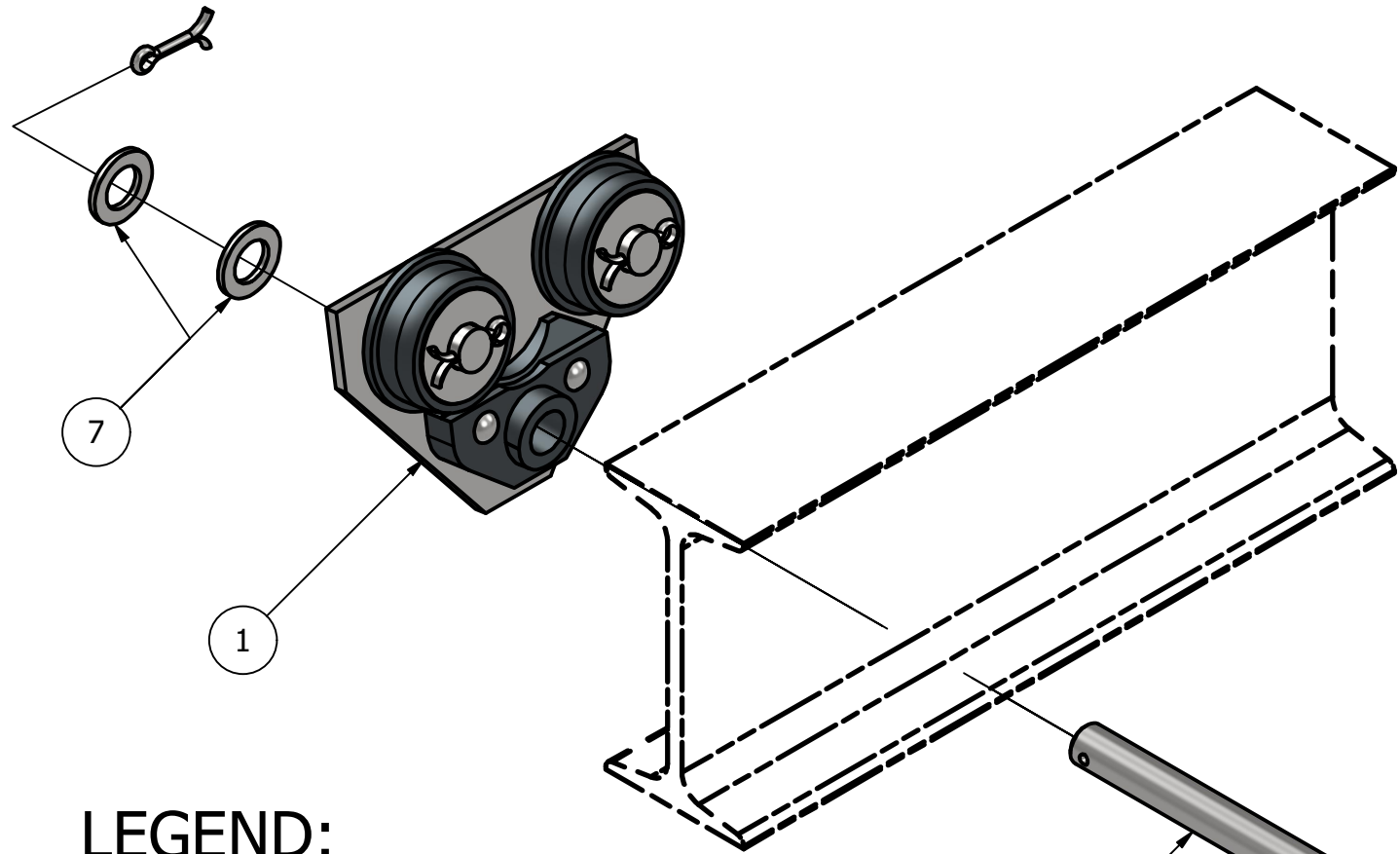
MANAGER: G. STROMMEN

DRAFTER: N. CABADING

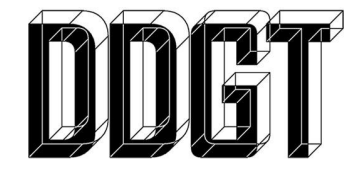
DATE: 12/4/2023

SCALE: AS NOTED

PAGE #: 6 OF 6



PARTS LIST		
ITEM	QTY	PART NUMBER
1	2	SIDE PLATE SUB-ASSEMBLY
2	1	AXLE
3	1	HOOK
7	12	ADJUSTING WASHER
10	6	COTTER PIN



DIGITAL DESIGN
GRAPHICS
TECHNOLOGY

WWW.DDGT.NET

LEGEND:

- ∅ DIAMETER
- R RADIUS
- ° DEGREES
- ┌ SPOTFACE/
COUNTERBORE
- ∨ COUNTERSINK
- ∇ DEPTH
- CUBED

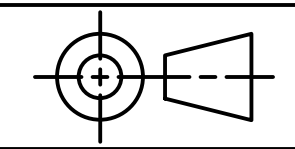
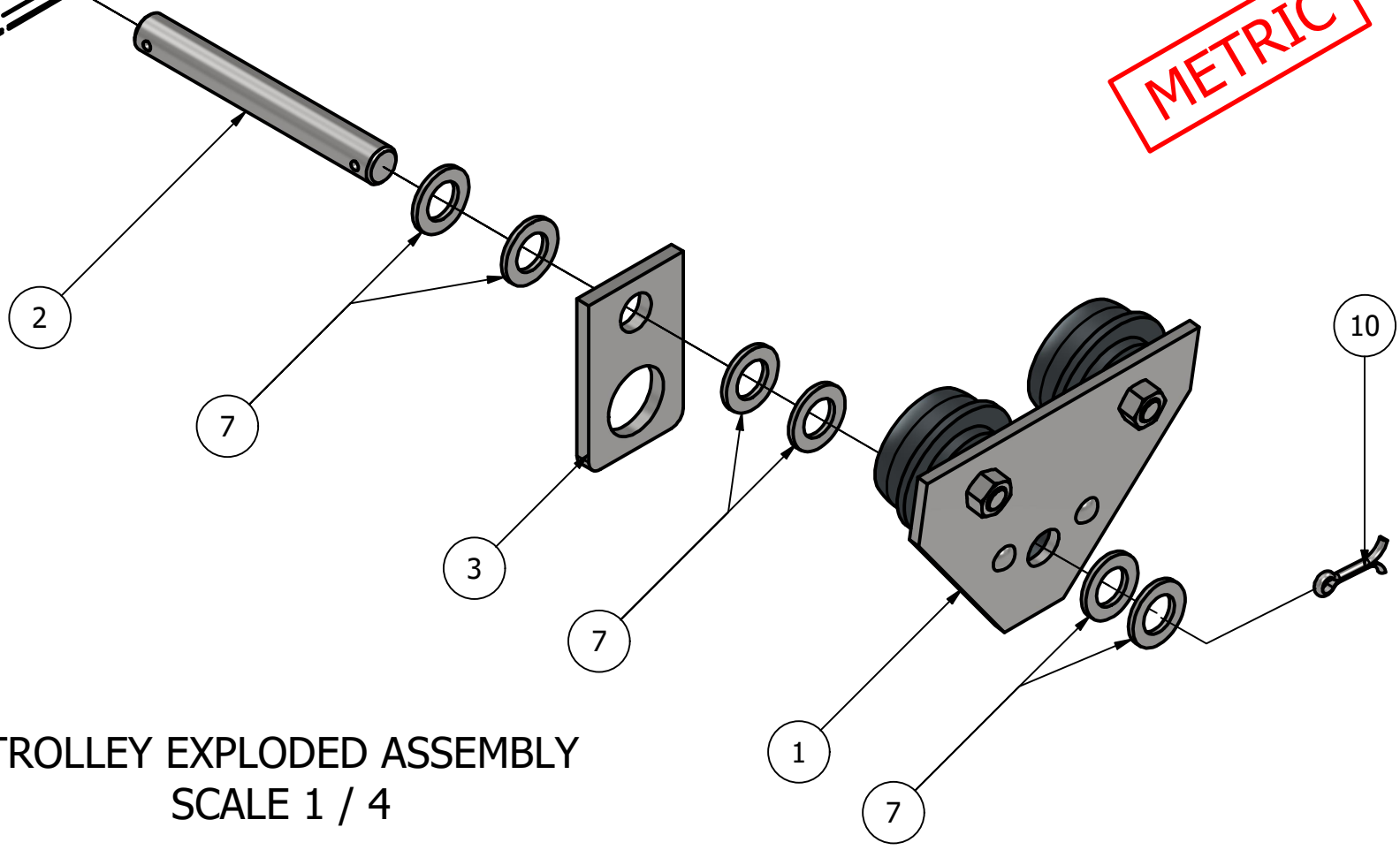
GENERAL NOTES

TROLLEY TO BE MOUNTED ON AN S200 X 34 BEAM

ALL CHAMBERS ARE 2 x 2 UNLESS OTHERWISE

TROLLEY EXPLODED ASSEMBLY
SCALE 1 / 4

METRIC



TOLERANCES UNLESS SPECIFIED:
MILLIMETERS:
WHOLE NUMBERS = ±.5
XX = ±.25
XXX = ±.12
FRACTIONAL ± 1/64"
ANGLES ±1 DEGREE
SURFACES ³² ✓

CLASS: DDGT120

ASSIGNMENT #: XX

INVENOR DRAWING NAME:
TROLLEY

FIG #: 14-83

MANAGER: G. STROMMEN

DRAFTER: N. CABADING

DATE: 12/4/2023

SCALE: AS NOTED

PAGE #: 2 OF 6